

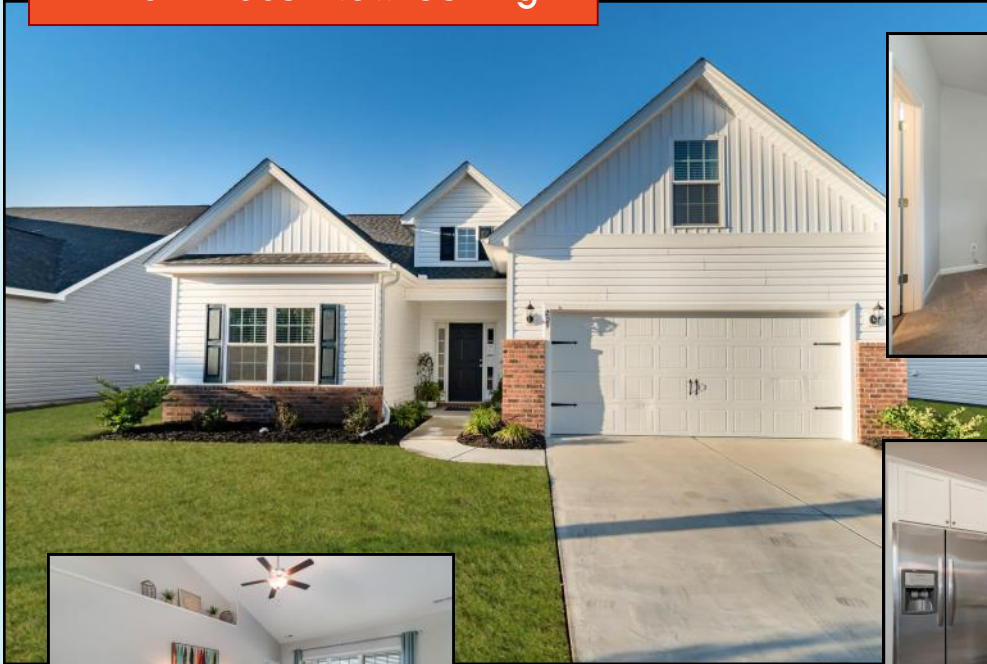
OCEAN PALMS

A Beverly Homes Community



Final Phase Now Selling

A Natural Gas Community



NEW HOMES IN SURFSIDE BEACH, SC

Welcome to Ocean Palms, the community voted Best Housing Development/Neighborhood by *The Sun News* Best of the Beach 2021! Located West of Hwy 17 Business, Ocean Palms offers you the benefits of an unmatched location, a relaxed lifestyle, and all that the Grand Strand area offers. Ocean Palms is a natural gas community, bringing you the comfort and benefits of Natural Gas. Call today to schedule a time to see your future lifestyle at Ocean Palms!

Community Highlights

- ◆ Low Monthly HOA
- ◆ Golf Cart Ride to the Beach
- ◆ Water View & Perimeter Lots
- ◆ Home Customization Available
- ◆ 3, 4 & 5 Bedroom Models Available
- ◆ Natural Gas Community
- ◆ Community Pool & Cabana

Kevin Barry
(843) 424-0126
kevinbarry@beverlyhomesc.com

215 Lifestyle Court, Surfside Beach SC

**BEVERLY
HOMES**
Building Lifestyles





Standard Features

Classic Finishing Touches

- 9' Ceilings on First Floor with 8' on Second Floor (Per Plan)
- Smooth Finish Drywall Ceilings Throughout, Including Garage
- Fully Finished, Painted and Trimmed Garage
- Garage Attic Space Floored for Storage with Drop Down Stair Access (Per Plan)
- Vaulted and Tray Ceilings (Per Plan)
- Select Vinyl Flooring in Wet Areas
- Upgraded **Shaw**® Stain Resistant Carpet with 6lb Rebound Padding in Bedrooms, Living, Hallways and Bonus Room (Per Plan)
- Upgraded Trim Package, including 3.25" Decorative Base Board, 2.25" Casing and Arched Openings (Per Plan)
- Decorative Cheyenne Design Interior Doors
- Distinctive 6 Panel Entrance Door at the Front Door and from the Garage into the Home
- Brushed Nickel Hardware on All Interior Doors
- Walk-In Closets with Ventilated Closet Shelving, Including a Double Row in Master Bedroom
- Decorative Chrome or Brushed Nickel Glass Light Fixtures (Per Plan)
- White Toggle Switches
- Pre-Wired Phone and Internet Locations in All Bedrooms and the Great Room (Per Plan)
- Pre-Wired Cable Locations in All Bedrooms and the Great Room (Per Plan)
- Fans in Master Bedroom, Living Room and Rear Porch (Per Plan)

Designer Kitchens

- Frigidaire® Energy Saving Stainless Steel Appliance Package, including Direct Vent Space Saver Microwave, Multi-Cycle Dishwasher and Gas Range with Self-Cleaning Oven
- **Aristokraft**™ Profiled Birch Cabinets with Gunmetal Hardware
- Ice Maker Connection
- High Quality Formica Counters with Stainless Steel Sink and Faucet with Detachable Sprayer
- 1/3 Horsepower Energy Efficient Garbage Disposal
- Recessed Lighting Package

Relaxing Baths

- **Aristokraft**™ Decorative Vanity Cabinets
- Durable Cultured Marble Countertops
- Elongated Toilets
- Executive Height Vanities in All Bathrooms
- Anti-Scald Shower Faucets
- 5' Extra Large Showers with Seat(s)
- Linen Closets (Per Plan)
- Vented Exhaust Fans in All Baths
- Decorative Towel Rods and Toilet Paper Holders
- Full-Length Vanity Mirrors

Ask Your Sales Consultant about Custom Home Changes to Make Your New Home Truly Yours!

Exciting Exteriors

- Front Entry 2 Car Garages – Steel Reinforced with **Liftmaster™** Door Lift and **MYQ Connectivity** for Mobile Operation
- **Royal™** Low Maintenance Premium Vinyl Siding, Providing a Long-Lasting, Easy-to-Clean Exterior
- Covered Front and Rear Porches (Per Plan)
- Maintenance-Free Soffits and Fascia
- **YKK™ Styleview** Low E Vinyl Windows with Insulated Glass and Screens
- Professionally Designed Landscape Package, Including Sodded Yards (14 Pallet Max) and Beautifully Landscaped and Mulched Beds along Front of Home
- Exterior Weatherproof GFI-Protected Electrical Outlets (Per Plan)
- **GAF Timberline™** Architectural Shingles
- Concrete Walkways and Driveways
- Covered Porches with Ceiling Fan Kit (Per Plan)
- Concrete Patio (Per Plan)
- 2 Hose Bibs (1 on Each Side of Home)
- Shutters on Front Windows (Per Plan)
- Water Main Shutoff Valve Located in the Garage
- Fiberglass Insulated Entry Door with Brushed Nickel Handle Set

Dependable Warranties

- Full-Time Beverly Homes Warranty Department
- 1-Year Coverage on Materials & Workmanship
- **Sentricon™** Termite Colony Elimination System with Renewable Bond, the #1 Choice of Builders and Homeowners
- Pre-Closing Homeowner Orientation

Energy-Efficient Designs and Quality Construction

- Insulated Low E Glass Single Hung Tilt-In Windows and Patio Doors
- 15 SEER Central Air Conditioning with Energy-Efficient Gas Furnace with Space Conditioned Design and Accurate Load Calculation for HVAC Comfort
- Energy-Efficient **Rinnai™** Tankless Hot Water Heater
- Washer and Dryer Hook-Ups with Dryer Vent
- Fiberglass Insulation: Exterior Sidewalls R-13
- R-30 Ceiling Insulation, Keeping You Cool in Summer and Warm in Winter
- All Walls Framed 16" on Center, Providing a More Structurally Sound Home
- 200 Amp Electrical Service with Copper Wiring
- Extended 10-Year Warranty Option on HVAC Equipment
- Digital Thermostat
- True-Engineered Roof Truss System
- **Homeguard™** High Performance Barrier to Guard against Water, Moisture and Air Filtration
- Soil Compaction before Concrete Placement
- Monolithic Slab that Provides a Solid Foundation
- All Building Plans are Engineer-Sealed

Home Security and Safety

- Security Deadbolt Locks and Handle Sets on Exterior Doors (Per Plan)
- Smoke and Carbon Monoxide Detectors (Per Code)
- Tempered Glass Windows (Per Code)
- Flood Lights on Front and Rear of Home with Coach Lights on Both Sides of Garage Door
- Pre-Wired for Security System; See Sales Consultant for Available Packages and Add-Ons

Note: Beverly Homes offers

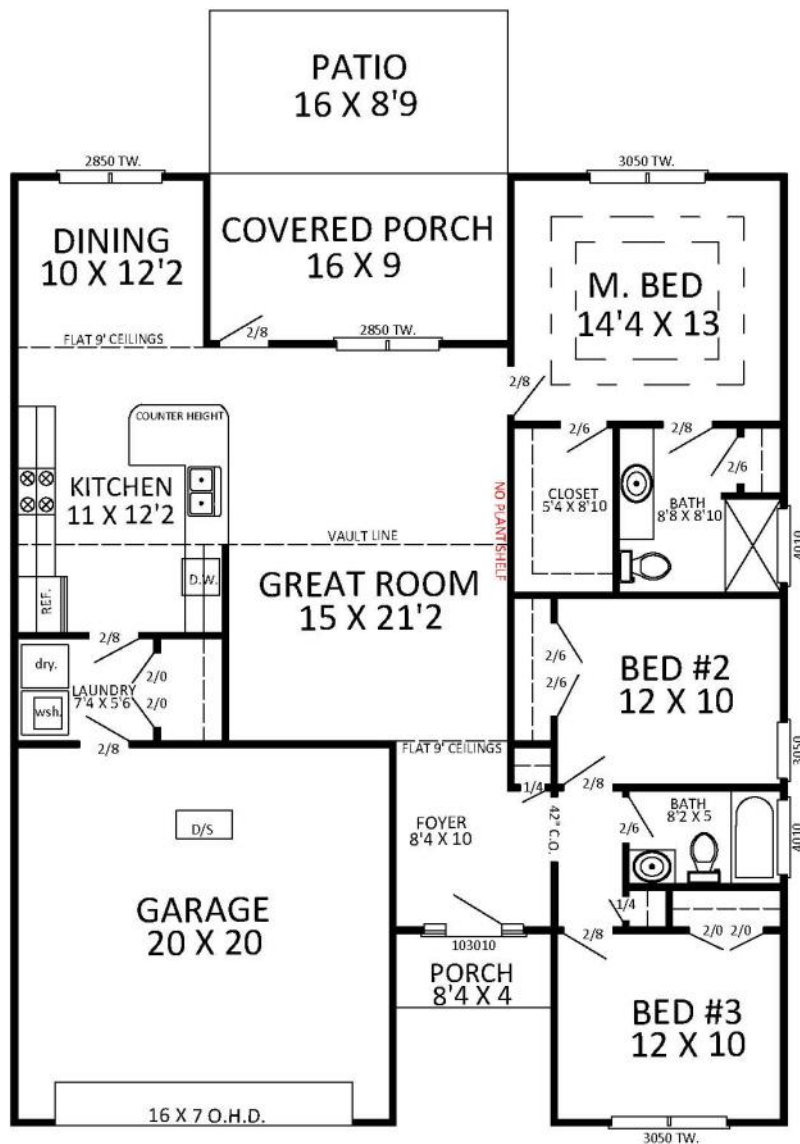
Home Customization and Upgrades. Please contact:

Kevin Barry — 843.424.0126





The Fripp

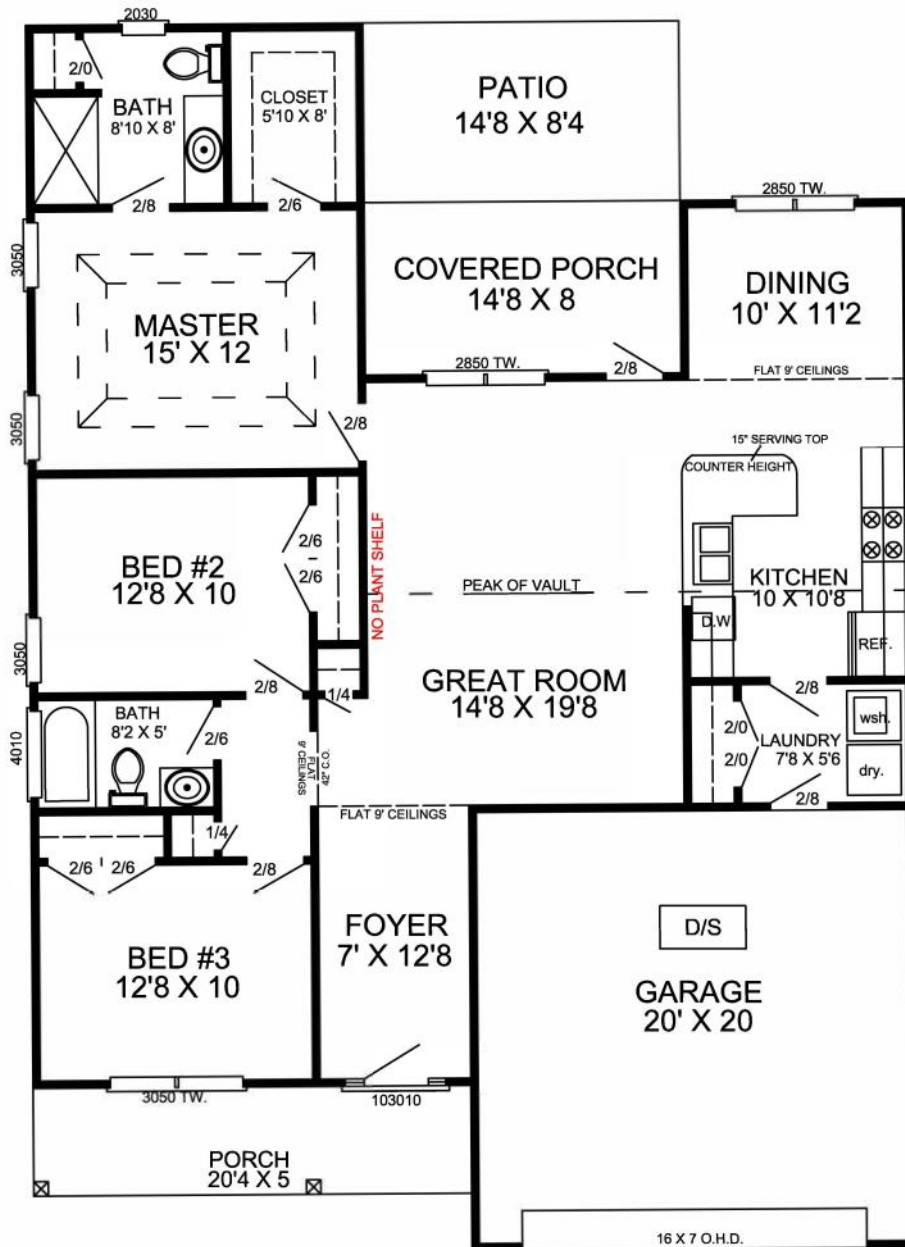


THE FRIPP
 1468 HEATED
 177 PORCHES
 435 GARAGE
 2080 TOTAL





The Busbee

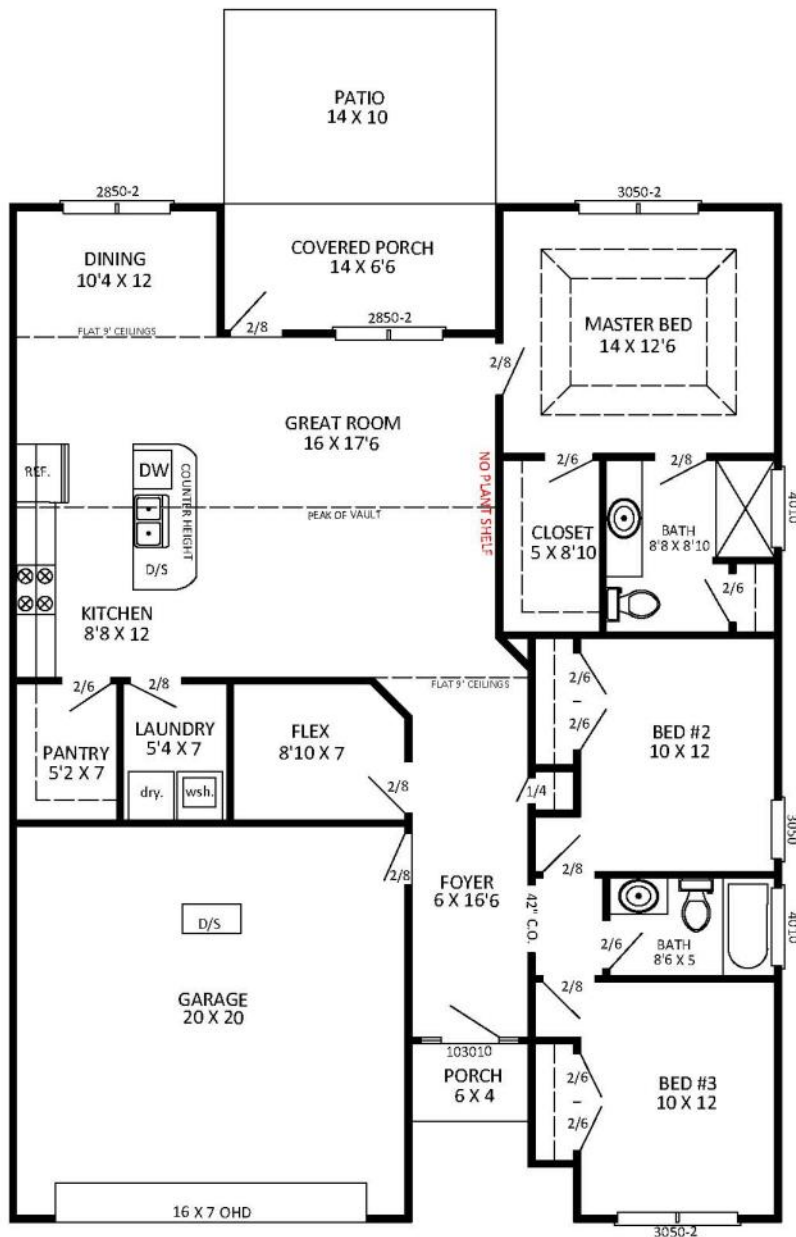


THE BUSBEE
 1,437 HEATED
 219 PORCHES
 416 GARAGE
 2,072 TOTAL





The Hatteras

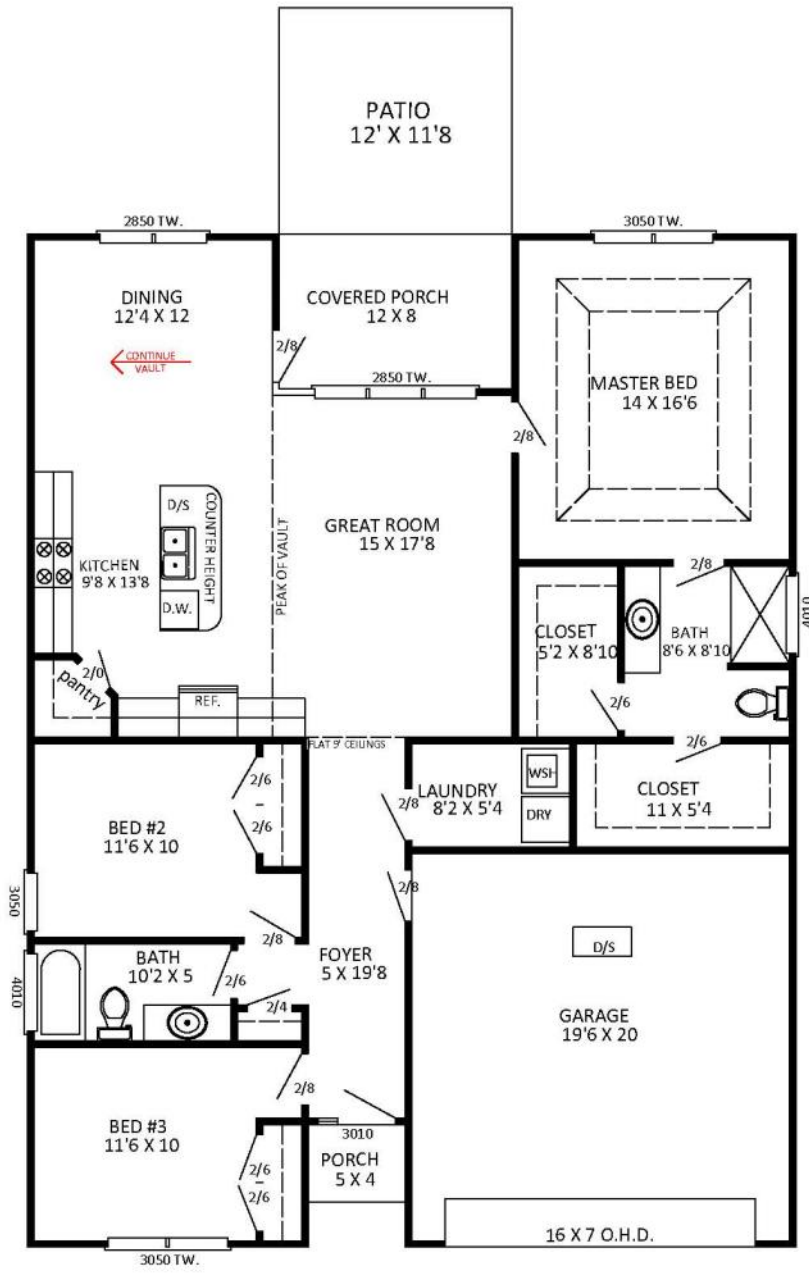


Hatteras
 1507 HEATED
 115 PORCHES
 416 GARAGE
 2038 TOTAL





The Topsail

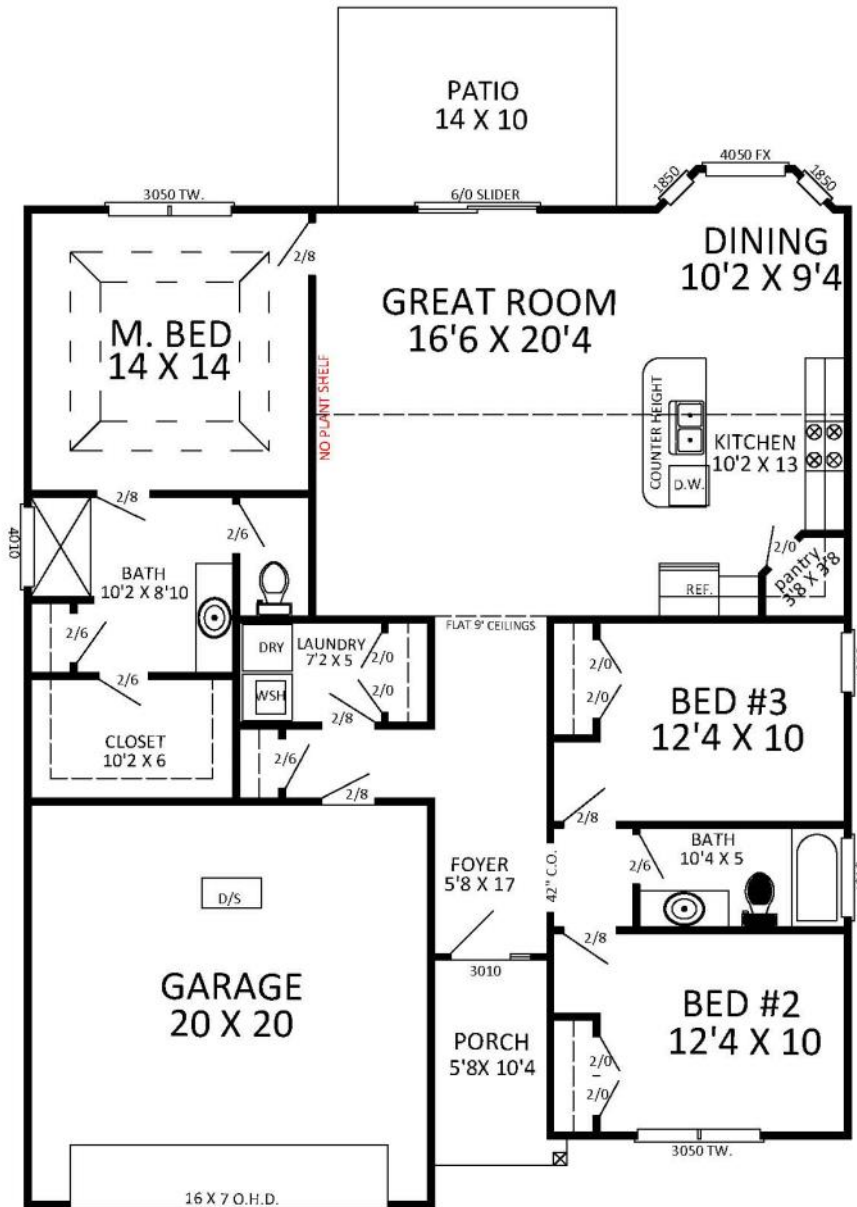


Topsail
 1,543 HEATED
 405 GARAGE
 116 PORCHES
 2,064 TOTAL





The Seascape

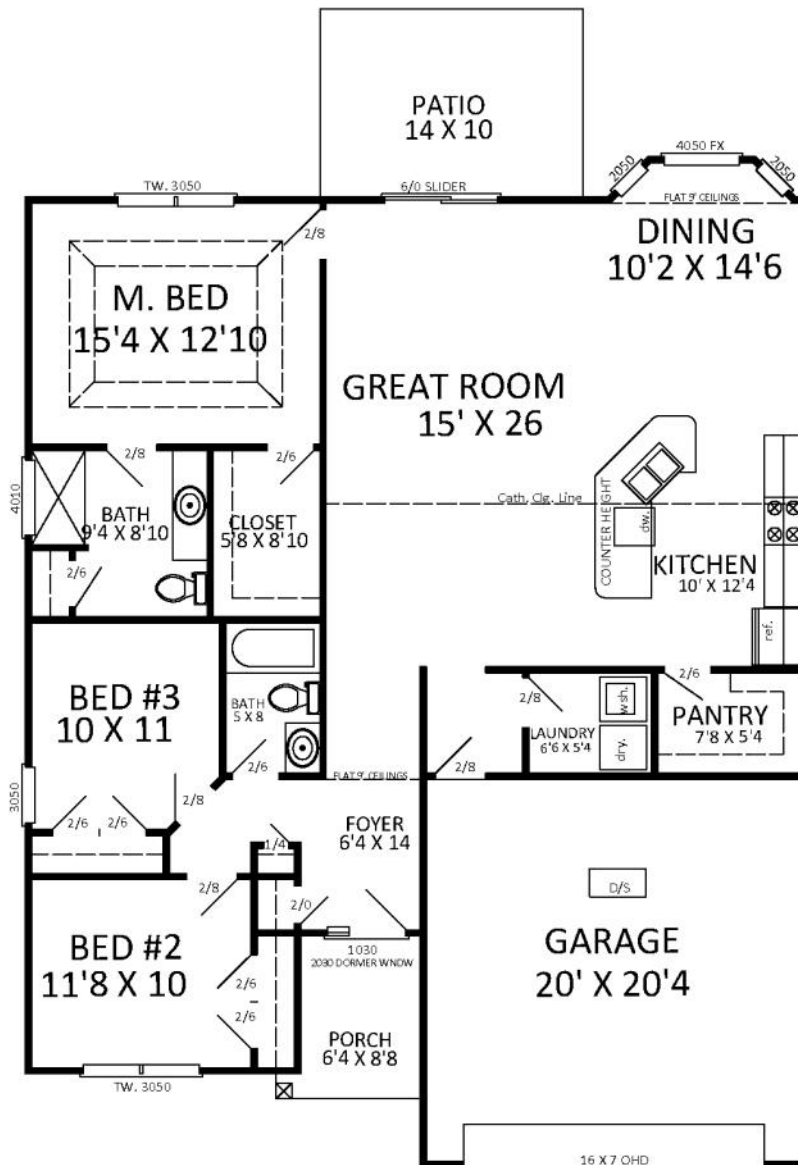


SEASCAPE
 1,576 HEATED
 418 GARAGE
 60 PORCHES
 2,054 TOTAL





The Edisto

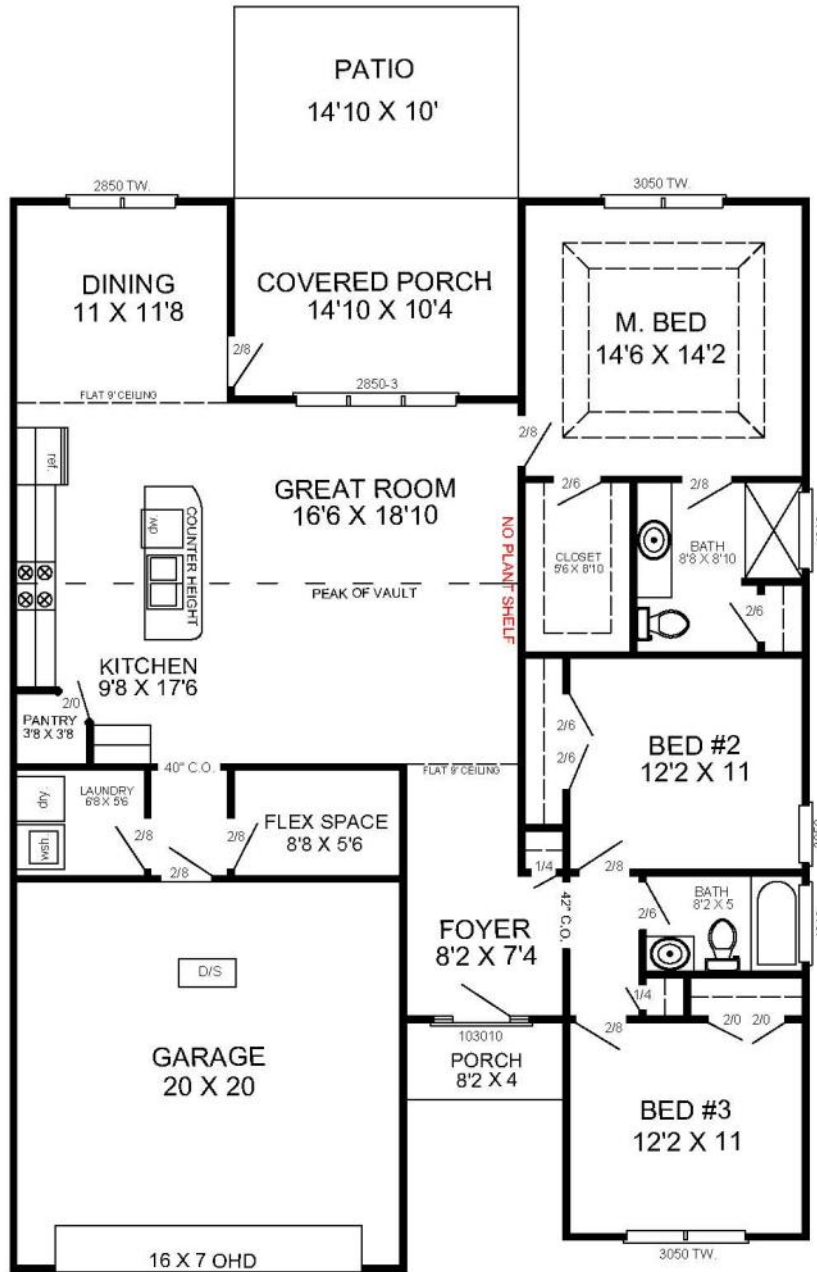


EDISTO
 1,594 HEATED
 57 PORCHES
 427 Garage
 2,078 Total





The Capers



The Capers

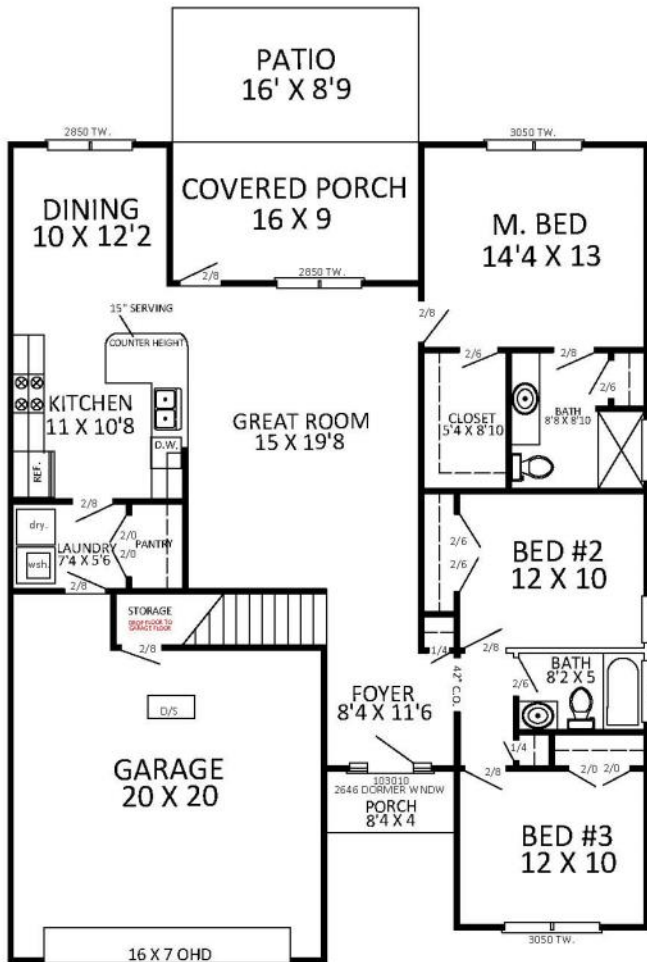
1635 HEATED
185 PORCHES
418 GARAGE
2238 TOTAL





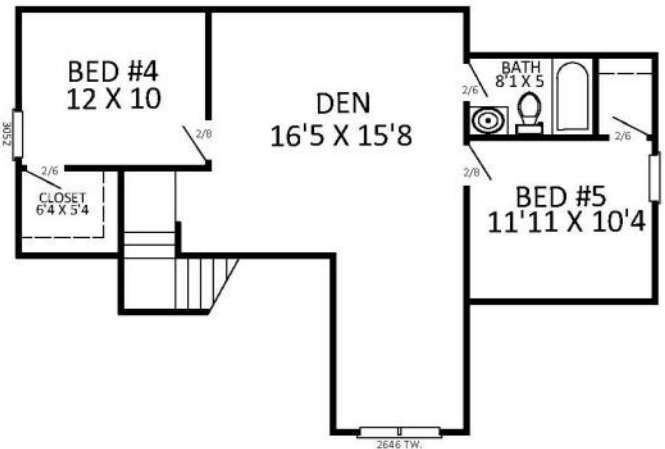
The Fripp II

Main Floor



Second Level

THE FRIPP II
 1,505 HEATED FIRST
 784 HEATED SECOND
 2,288 Total Heated
 442 GARAGE
 2,908 TOTAL

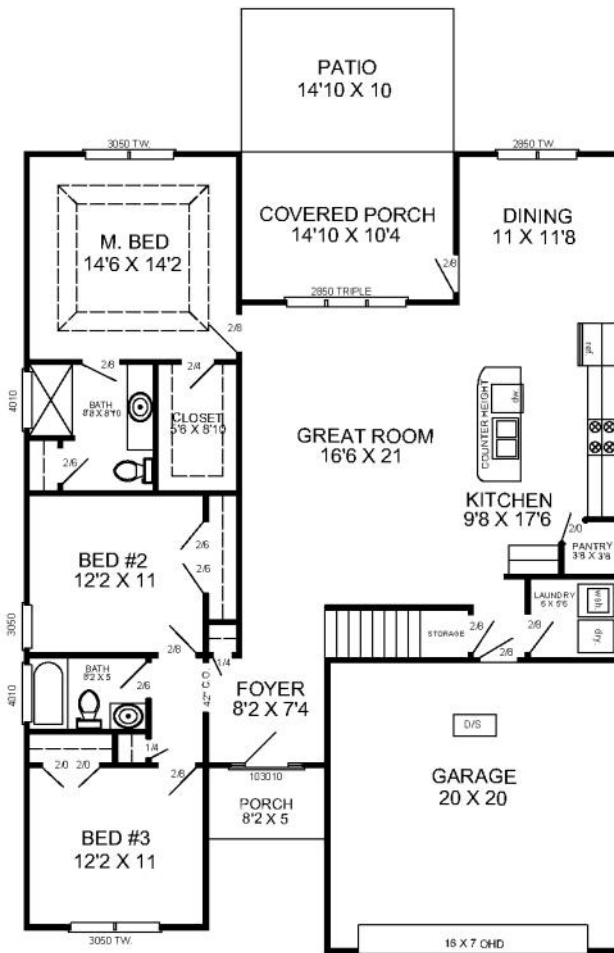




The Capers II

Main Floor

Second Level



Capers II

1,635 HEATED DOWN
 778 HEATED UP
 194 PORCHES
 418 GARAGE
 3,025 TOTAL

